



JFA  
YACHTS

# Shipyard Presentation – Facilities

## Well adapted facilities for new build and refit

JFA installations are recent and well maintained so as to always be at top level.

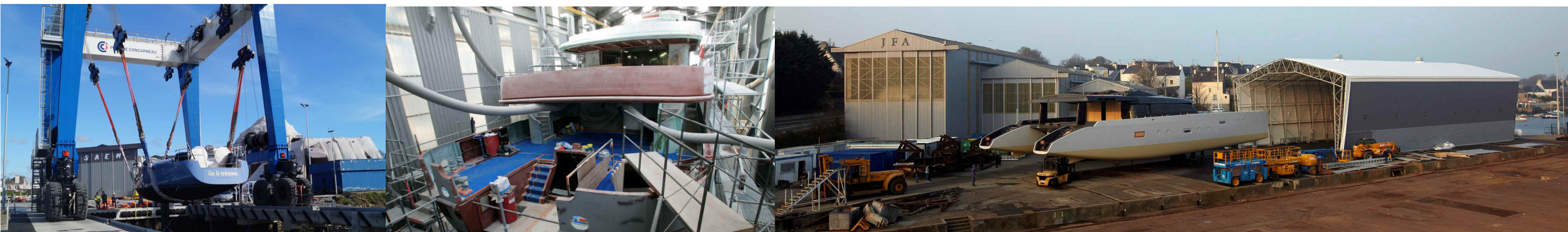
Its facilities enable the yard to receive boats up to 50m under shed. The yard is equipped with five halls. Hall 3, with its big height, is especially dedicated to motor yachts while hall 4 and 5, with its large width, hosts multihulls. All buildings are equipped with heating systems and ventilation.

JFA has its own 60m private pontoon for commissioning and trials.

The yard is connected to a syncrolift that can lift up 100m long and 17m wide boats up to 2000 tons. Yard is also linked to a 400 T Travel lift.

In addition, Concarneau's Harbour has a 130m long dry-dock. JFA can thus undertake refits under ship cocoon of boats up to 100m.

JFA also offers dedicated offices, storage areas and a meeting room for the owner's representatives.

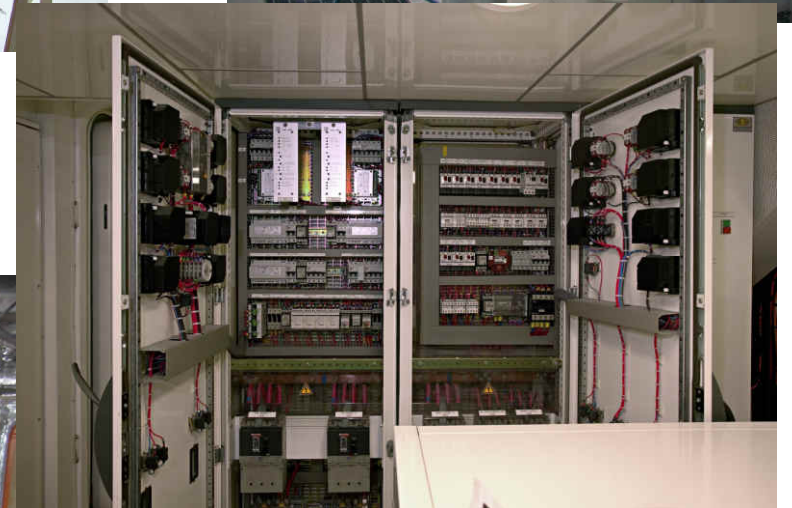
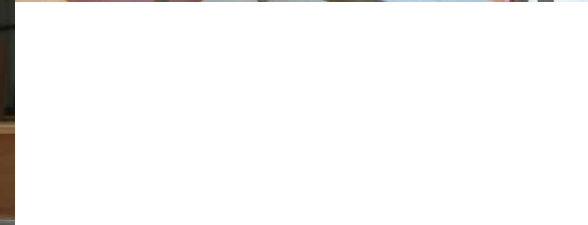


# Shipyard Presentation – Competencies

## Competencies

JFA has the in-house competencies to carry out all types jobs needed to build or refit yachts:

- Project Management
- Design office
- Cabinet making
- Varnishing
- Metalwork
- Pipefitting & Plumbing
- Mechanical assembly
- Electricity
- Painting
- Deck fittings
- Teak decking
- Electronics



# Shipyard Presentation – Organisation & Quality



## More than 20 years of experience

Since 1993, JFA has had the chance to achieve many projects, both new build and refit.

Building diverse custom yachts has led JFA to increase its experience and its versatility. Today, every project follows an established and proven method. Indeed, each project is structured around an organisation that runs from the signature of the contract, to drawings, purchases, weight monitoring and onboard documentation.



JFA Yachts has remained a human-sized company with a horizontal organization. Every project is run by a dedicated project manager and his design team, in charge of all the building aspects: engineering, purchasing, weight monitoring, onboard measurements, quality checks, trials and commissioning. Indeed, for such elaborate projects, project management is crucial in order to achieve reliable high quality yachts at an interesting price, with a determined weight and within an agreed time frame.

## Passion and attention to details

Working on Superyachts requires highly skilled meticulous craftsmen specialised in their own fields.

Care is given designing, adapting and building high level interiors & exteriors according to drawings of well known designers.

Precise specifications and a good knowledge of the market, materials and techniques are needed to meet such high quality levels.

Our quality management proceeds with scheduled onboard checks of the accomplished work.

Constant attention is necessary in order to keep pushing back the boundaries and meet the levels of excellence that building yachts requires.



# Shipyard Presentation – Refit List



80' Arrayan



110' Amadeus



100' Wither



118' Magistral



100' Reesle



80' Matokaoma



100' Scarena



125' Jaguar



70' Aldebaran



95' Mashua Bluu



146' Mari Cha III



60' Moonwave

# Shipyard Presentation – New build list



75' Kermor



60' Boreale



90' Ti moune



118' Magistral



82' Atalanta



122' Axantha



70' Aldebaran - JFA 70 Classic



85' Sun Tenareze



82' Atao - JFA 82 Classic



138' Bystander



90' Hortense



141' Axantha II

# Shipyard Presentation – Recent projects

**Delivered in 2012**



**mousetrap** - 110' Catamaran - VPLP110  
Carbon hulls & superstructure

**Delivered in 2018**



**NDS Evolution** - Long Island 85' n°2  
Aluminium hulls & composite superstructure

**To be delivered in 2018**



**70' Fast Cruising Sloop**  
Aluminium hull & composite superstructure

**Delivered in 2014**



**WindQuest** - Long Island 85' n°1 Catamaran  
Aluminium hulls & composite superstructure

**To be delivered in 2019**



**135' Motor Yacht** - Steel hull and Aluminium superstructure

**To be delivered in 2020**



**Long Island 78' Power**  
Aluminium hull & composite superstructure

# Shipyard Presentation – Location

## *Ideally situated on the Atlantic coast*

The yard is based in Concarneau, Brittany, France.

The yard is accessible easily

By sea : Large harbor constantly accessible until 5m draft.

By road: Freeway to Concarneau

By train: TGV from Paris until Rosporden station, Quimper or Lorient

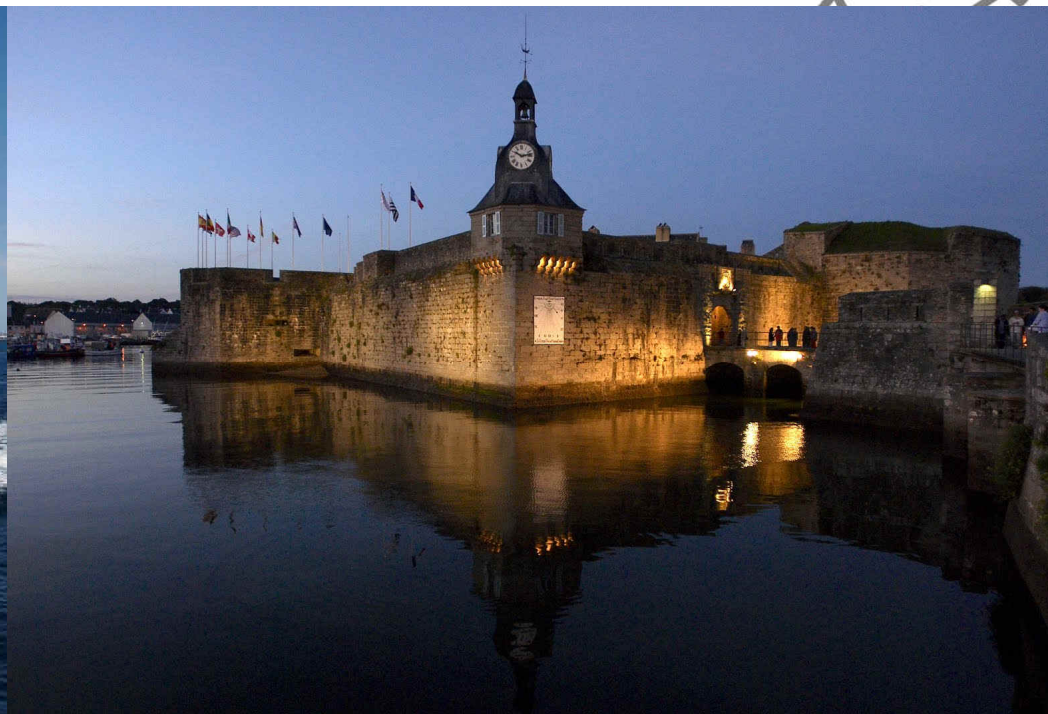
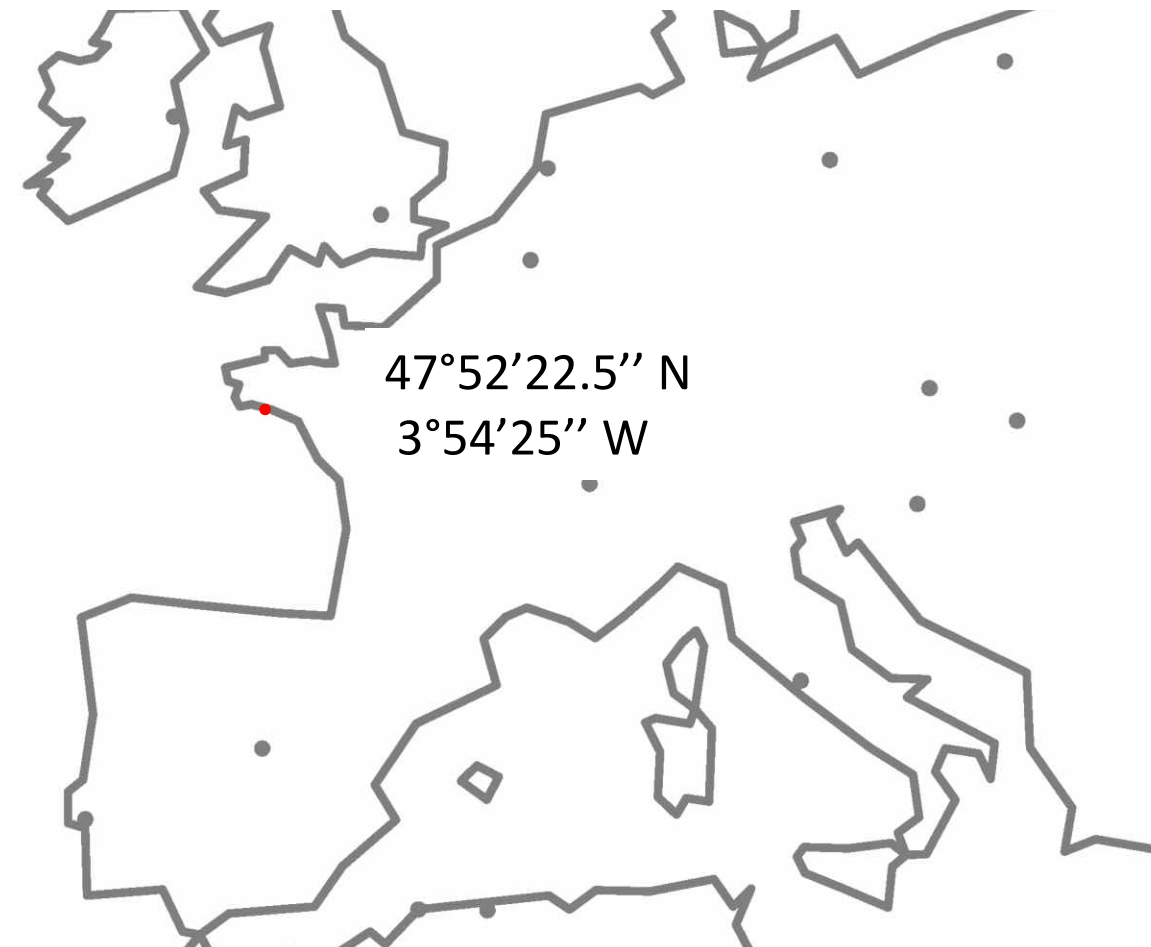
By plane: Airports at Quimper, Lorient, Brest, Nantes or Rennes

## *Concarneau : An enjoyable place and coast to visit*

Concarneau and its region are renowned for tourism and gastronomy

Maritime culture is much to the fore in Concarneau and Brittany.

Seaside, coast, bay and island are also ideal places to visit by sea.







JFA Yachts - Quai des Seychelles - 29900 CONCARNEAU - France - T +33 (0)2 98 60 49 48 - F +33 (0)2 98 60 49 40 - [jfa@jfa-yachts.com](mailto:jfa@jfa-yachts.com)



[www.facebook.com/JFA.Yachts](https://www.facebook.com/JFA.Yachts)